



Taylor Place, London, E3

BUTLER  STAG



Guide Price £350,000 - £375,000
Welcome to Caramel Court, a bright and contemporary two-bedroom apartment set within the sought-after Taylor Place development in Bow, E3. Perfectly positioned for professionals, first-time buyers, or investors, this well-presented home combines modern comfort with excellent connectivity to the City and Canary Wharf.



Leasehold

- Two Double Bedrooms
- 24 Hour On-Site Concierge
- Flooded With Natural Light
- Great Public Transport Links
- Private Balcony
- Gated Development
- EWS1 Compliant
- Immaculate Condition

Flooded with natural light, the spacious open-plan living area opens onto a private balcony, ideal for relaxing or entertaining. The modern kitchen is equipped with integrated appliances and ample storage, while both bedrooms offer comfortable proportion, enhancing the aesthetic appeal and providing a sense of openness and airiness to all living rooms, which are complimented by floor-to-ceiling windows. Immaculately presented, the bathroom exudes sophistication with modern fixtures and contemporary tiling. The majority of the apartment boasts newly installed hardwood flooring.

Situated just moments from Bow Church DLR and Bow Road Underground Station, residents enjoy quick access to Stratford, The City, and Westfield shopping centre. Just across the road from the canal side and only a 15 minute walk to Hackney Wick and the Olympic Park. Local green spaces such as Victoria Park and Mile End Park are also within easy reach, adding to the appeal of this vibrant East London location.

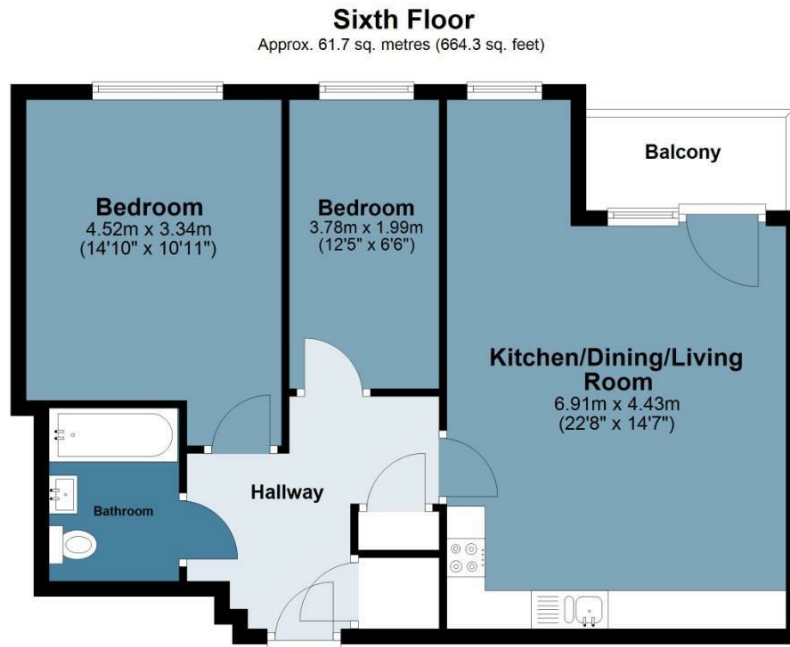
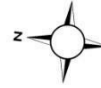




Caramel Court

Approx. Gross Internal Area 61.7 Sq M (664.3 Sq Ft)

BUTLER & STAG



Measurements are approximate and for illustration purposes only. While we do not doubt the accuracy and completeness, we advise you conduct a careful independent assessment of the property to determine monetary value.
© @modephoto.uk www.modephoto.co.uk

IMPORTANT NOTICE - These particulars have been prepared in good faith and they are not intended to constitute part of an offer or contract. We have not performed a structural survey on this property and the services, appliances and specific fittings have not been tested. All photographs, measurements, floor plans and distances referred to are given as a guide and should not be relied upon.

BUTLER & STAG

☎ 020 8102 1236

🏠 508 Roman Road, Bow, London, E3 5LU

✉ bow@butlerandstag.com

www.butlerandstag.uk